

## SPEC SHEET + MEASUREMENTS

**DISTRICT**

District® Women's Perfect Tri® Fleece Short. DT1309

### Product photo



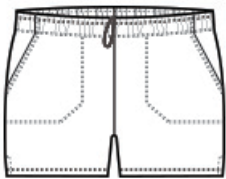
Like its namesake—the iconic Perfect Tri Tee—our Perfect Tri Fleece blends three yarns for an unbelievably soft short at an unbeatable value.

- 7.1-ounce (240 GSM)
- 54/40/6 polyester/combed ring spun cotton/ rayon, 3-end fleece
- Mitered front pockets
- Self-fabric elastic waistband with dyed-to-match interior drawcord
- Side seamed
- 3-inch inseam, size medium
- Tear-away label

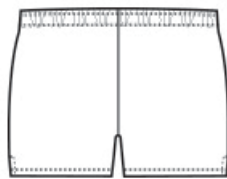
### CARE INSTRUCTIONS

Machine Wash Cold With Like Colors. Only Non-Chlorine Bleach When Needed. Tumble Dry Low. Cool Iron If Necessary.

### Sketches



front



back

# SPEC SHEET + MEASUREMENTS



District® Women's Perfect Tri® Fleece Short. DT1309

## PRODUCT MEASUREMENTS

	XS	S	M	L	XL	XXL	3XL	4XL
Size	2	4/6	8/10	12/14	16/18	20/22	24/26	28/30
Inseam	3	3	3	3 1/4	3 1/4	3 1/2	3 1/2	3 1/2
Waist	13 3/4	14 3/4	15 3/4	17 1/4	18 3/4	20 1/4	22 1/4	24 1/4

**Inseam:** Measured from crotch seam to hem.

**Waist:** Measured point to point across the waistband when laid flat.

## SIZE CHARTS

	XS	S	M	L	XL	XXL	3XL	4XL
Size	2	4/6	8/10	12/14	16/18	20/22	24/26	28/30
Waist	24-26	27-28	29-30	31-33	34-36	37-39	40-43	44-47
Hip	34-36	37-38	39-40	41-43	44-46	47-49	50-53	54-57

# SPEC SHEET + MEASUREMENTS



District® Women's Perfect Tri® Fleece Short. DT1309

## HOW TO MEASURE

---



**Waist** Measure around the smallest part of the natural waist.

**Hips** With feet together, measure around the fullest part of hips, keep tape horizontal.

## COLORS

---



Black  
PMS BLACK  
C



Grey Frost  
PMS COOL  
GREY 11C